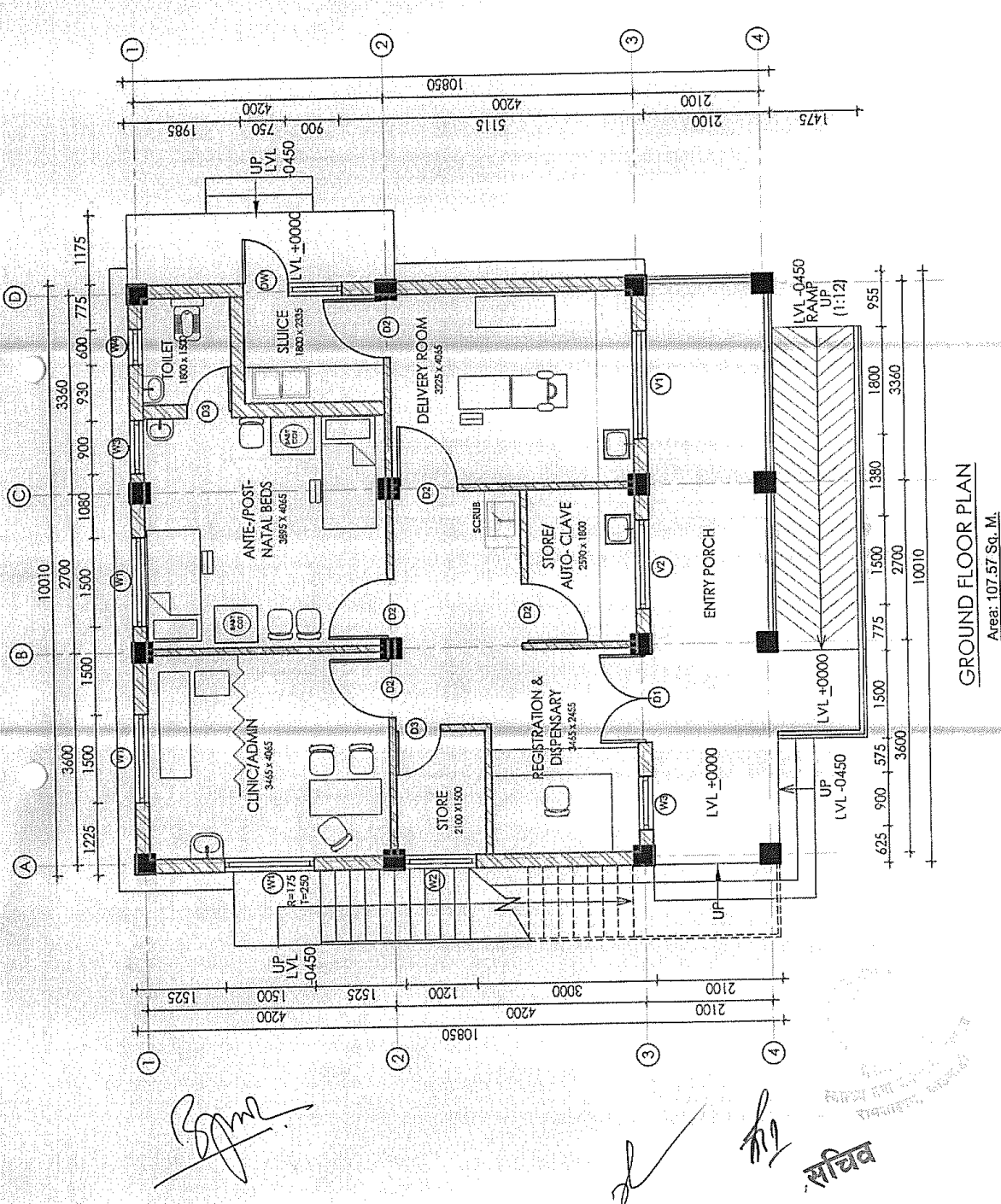
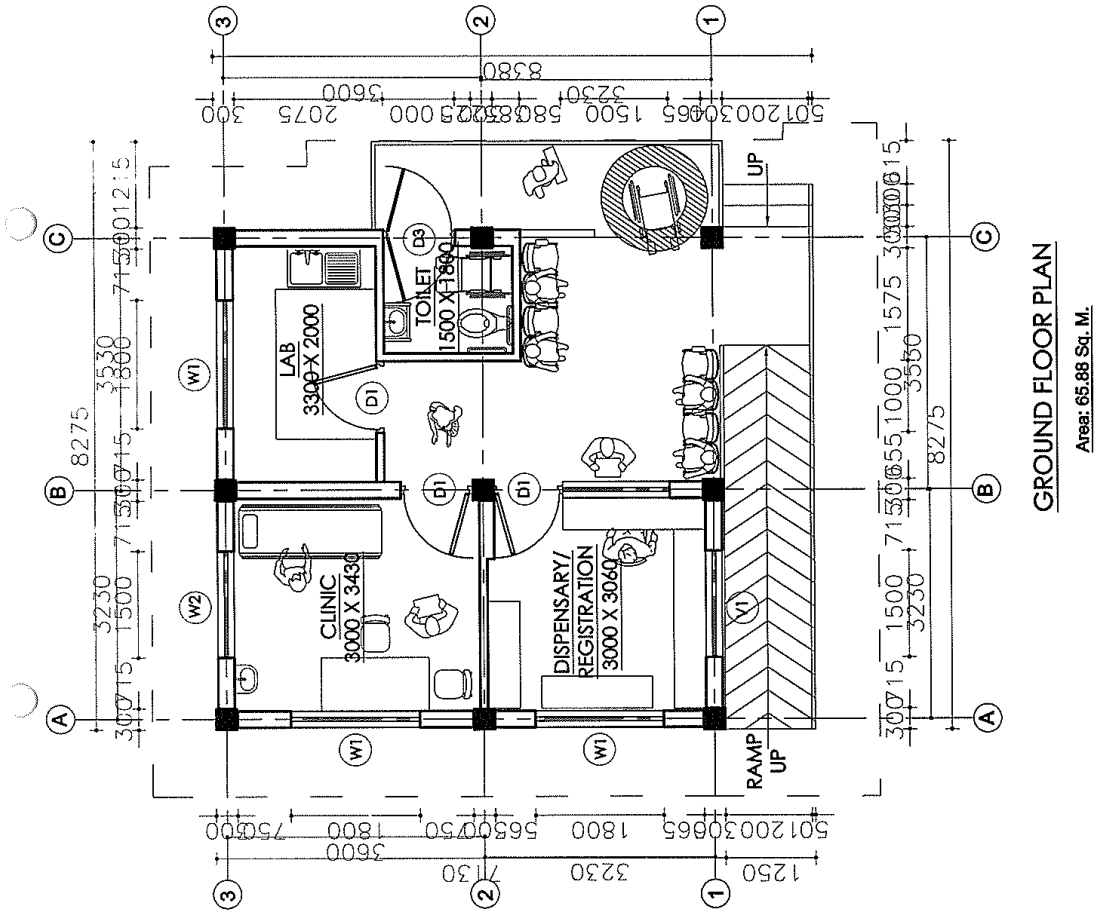


TYPE 1





Ward level health care center Type 2

[Handwritten signatures and stamps]
 सचिव

Tentative cost estimate for ward level health care center.

S.N	Ward level health care facility type	Floor area (sq.m)	Unit rate per sq.m	Amount	VAT+ Contingency	Grand total	Ward population
1	Type 1	107.57	50000	5378500.00	968130.00	6346630.00	
2	Type 2	65.88	50000	3294000.00	592920.00	3886920.00	

[Handwritten signatures and stamps]
 सचिव